

# 2.0 flanges & fittings



• <i>CF Flanges</i>	2-3
• <i>CF Adapters &amp; Fittings</i>	4-7
• <i>CF Bellows</i>	8
• <i>CF Hybrid Adapters</i>	9
• <i>KF Flanges</i>	10
• <i>KF Hardware</i>	11
• <i>KF Fittings</i>	12-14
• <i>ISO-K (LF) Flanges</i>	15
• <i>ISO-K (LF) Hardware</i>	16
• <i>ISO-K (LF) Fittings</i>	17-18
• <i>Liquid Feedthroughs</i>	19

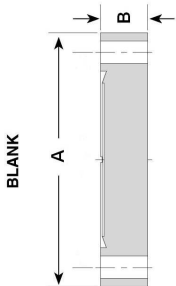
## Description

We supply flanges and fittings in standard CF-design. Available are fixed or rotatable flanges, flanges with through holes (clear holes) or with thread holes (tapped) and blank or weldable flanges. Standard flange sizes vary from DN16 to DN250 and show a metric threads where applicable. US style versions from 1.33" to 16.5" are possible on request. The flanges can be offered out of stainless steel 304L (1.4306) or out of 316L (1.4404), flanges out of 316LN (1.4429) can be supplied on request.

Please contact our sales office if you are looking for any further flange designs, configurations or a customized versions.



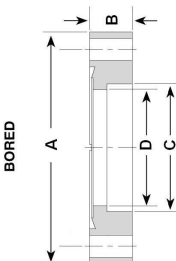
## Fixed blank flange



Type	Fixed blank flanges 304L clear holes	A	B	P/Number
CF16	FIXED FLANGE - 304L	34	7,6	2-CF-1000
CF40	FIXED FLANGE - 304L	69	12,7	2-CF-6500
CF63	FIXED FLANGE - 304L	113,5	17,5	2-CF-0010
CF100	FIXED FLANGE - 304L	152	20	2-CF-8210
CF160	FIXED FLANGE - 304L	202,5	22,3	2-CF-8410
CF200	FIXED FLANGE - 304L	253	24,6	2-CF-6510
CF250	FIXED FLANGE - 304L	304	28,4	2-CF-4610

Type	Fixed blank flanges 316L tapped	A	B	P/Number
CF16	FIXED FLANGE - 316L TAPPED M4	34	7,2	2-CF-4150
CF40	FIXED FLANGE - 316L TAPPED M6	69,5	12,7	2-CF-5150
CF63	FIXED FLANGE - 316L TAPPED M8	113,5	17,5	2-CF-6150
CF100	FIXED FLANGE - 316L TAPPED M8	152	20	2-CF-7150
CF160	FIXED FLANGE - 316L TAPPED M8	202,5	22	2-CF-8150
CF200	FIXED FLANGE - 316L TAPPED M8	253	24,5	2-CF-9150
CF250	FIXED FLANGE - 316L TAPPED M8	306	26	2-CF-0250

## Fixed weld flange

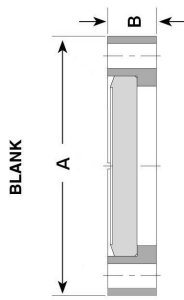


Type	Fixed weld 304L clear holes	A	B	C	D	P/Number
CF16	FIXED WELD FLANGE - 304L	34	7,6	19	16	2-CF-7000
CF40	FIXED WELD FLANGE - 304L	69	12,7	41,5	38	2-CF-3600
CF63	FIXED WELD FLANGE - 304L	113,5	17,5	63,7	60	2-CF-3010
CF100	FIXED WELD FLANGE - 304L	152	20	102	98,4	2-CF-9210
CF160	FIXED WELD FLANGE - 304L	202,5	22,3	153	148,2	2-CF-9410
CF200	FIXED WELD FLANGE - 304L	253	24,6	204	200	2-CF-7510
CF250	FIXED WELD FLANGE - 304L	304	28,4	255	248	2-CF-5610

Type	Fixed weld 316L tapped	A	B	C	D	P/Number
CF16	FIXED WELD FLANGE 316L M4	34	7,2	19,2	16	2-CF-7160
CF40	FIXED WELD FLANGE 316L M6	70	12,7	40,2	37	2-CF-8160
CF63	FIXED WELD FLANGE 316L M8	114	17,5	70,2	64	2-CF-9160
CF100	FIXED WELD FLANGE 316L M8	152	20	108,5	102	2-CF-0260
CF160	FIXED WELD FLANGE 316L M8	203	22	159,5	153	2-CF-1260
CF200	FIXED WELD FLANGE 316L M8	254	24,5	206,5	200	2-CF-2260
CF250	FIXED WELD FLANGE 316L M8	305	26	256,5	250	2-CF-3260

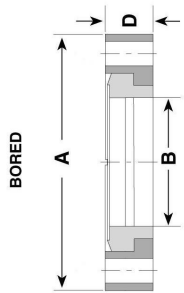
## CF Rotatable Flanges

### Rotatable blank flanges



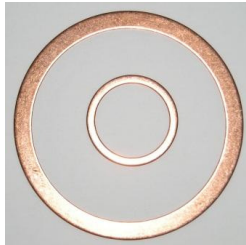
Type	Rotatable blank flanges 304L	A	B	P/Number
CF16	ROTATABLE BLANK FLANGE	34	7,6	2-CF-9100
CF40	ROTATABLE BLANK FLANGE	69	12,7	2-CF-2700
CF63	ROTATABLE BLANK FLANGE	113,5	17,5	2-CF-8010
CF100	ROTATABLE BLANK FLANGE	152	20	2-CF-2310
CF160	ROTATABLE BLANK FLANGE	202,5	22,3	2-CF-2510
CF200	ROTATABLE BLANK FLANGE	253	24,6	2-CF-0610
CF250	ROTATABLE BLANK FLANGE	304	28,4	2-CF-8610

### Rotatable weld flanges



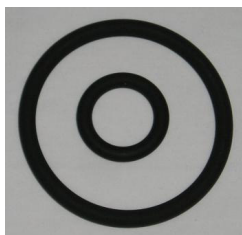
Type	Rotatable weld flange 304L	A	D	B	P/Number
CF16	ROTATABLE WELD FLANGE	34	7,2	16	2-CF-5200
CF40	ROTATABLE WELD FLANGE	69,5	12,7	38	2-CF-9700
CF63	ROTATABLE WELD FLANGE	113,5	17,5	60	2-CF-1110
CF100	ROTATABLE WELD FLANGE	152	20	98,4	2-CF-3310
CF160	ROTATABLE WELD FLANGE	202,5	22	148,2	2-CF-3510
CF200	ROTATABLE WELD FLANGE	253	24,5	199	2-CF-1610
CF250	ROTATABLE WELD FLANGE	306	26	248	2-CF-9610

## Standard Gaskets for CF Flanges



Type	OFE standard copper gaskets	ID	OD	Qty	P/Number
CF16	STANDARD COPPER OFE	16	21	10	2-CG-1010
CF40	STANDARD COPPER OFE	37	48	10	2-CG-3010
CF40	STANDARD COPPER OFE	39	48	10	2-CG-5010
CF63	STANDARD COPPER OFE	64	82	10	2-CG-7010
CF100	STANDARD COPPER OFE	102	120	10	2-CG-9010
CF160	STANDARD COPPER OFE	153	171	10	2-CG-1110
CF200	STANDARD COPPER OFE	203	222	10	2-CG-2110
CF250	STANDARD COPPER OFE	254	272,5	1	2-CG-3110

Silver plated, gold plated and aluminium gaskets also available upon request



Type	VITON standard gaskets	Qty	P/Number
CF16	VITON GASKETS REGULAR SECTION	5	2-VG-1000
CF40	VITON GASKETS REGULAR SECTION	5	2-VG-3000
CF63	VITON GASKETS REGULAR SECTION	1	2-VG-5000
CF100	VITON GASKETS REGULAR SECTION	1	2-VG-7000
CF160	VITON GASKETS REGULAR SECTION	1	2-VG-9000
CF200	VITON GASKETS REGULAR SECTION	1	2-VG-0100
CF250	VITON GASKETS REGULAR SECTION	1	2-VG1100

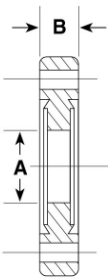
## CF Double Sided Flanges

2.2

### Description

Double sided flanges show on both sides the same CF knife edge configuration. Flange sizes vary from DN16 to DN200. US style versions from 1.33" to 16.5" are possible on request.

Please contact our sales office for any further designs or combinations, i.e. blank versions or combinations with radial attached tubings or pump ports.



Type	Bored double sided flanges 304L	A	B	P/Number
CF16	BORED DOUBLE SIDED FLANGE	16	7,6	2-CF-3640
CF16	BORED DOUBLE SIDED FLANGE THICK	16	12,7	2-CF-4640
CF40	BORED DOUBLE SIDED FLANGE	38	12,7	2-CF-4740
CF40	BORED DOUBLE SIDED FLANGE THICK	38	19	2-CF-6740
CF63	BORED DOUBLE SIDED FLANGE	63,8	17,3	2-CF-3840
CF100	BORED DOUBLE SIDED FLANGE	102	20	2-CF-7840
CF160	BORED DOUBLE SIDED FLANGE	153	22	2-CF-1940
CF200	BORED DOUBLE SIDED FLANGE	204	25	2-CF-3940

## CF Zero-Length adaptors

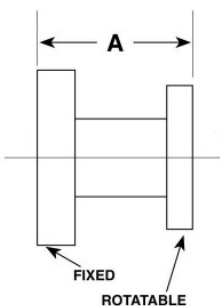
2.2 of adaptors

### Description

Zero-length adaptors combine two different CF knife edge styles on one flange. The smaller size comes up with thread holes, the bigger size with clear holes. This type of flange is ideal when space is limited for connecting purposes.

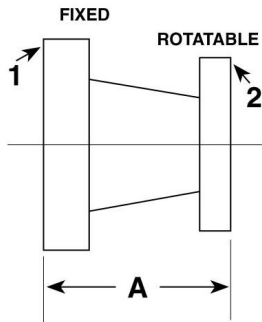
Type	CF zero-length adaptors 316L	Thick	ID	P/Number
40-16	ZERO LENGTH CF40-CF16 TAPPED M4	12,7	16	2-ZL-6104
63-40	ZERO LENGTH CF63-CF40 TAPPED M6	17,5	37	2-ZL-0436
100-40	ZERO LENGTH CF100-CF40 TAPPED M6	20	37	2-ZL-04001
100-63	ZERO LENGTH CF100-CF63 TAPPED M8	20	64	2-ZL-36001
160-40	ZERO LENGTH CF160-CF40 TAPPED M6	24	37	2-ZL-04061
160-63	ZERO LENGTH CF160-CF63 TAPPED M8	24	64	2-ZL-36061
160-100	ZERO LENGTH CF160-CF100 TAPPED M8	24	102	2-ZL-001061
200-63	ZERO LENGTH CF200-CF63 TAPPED M8	24	64	2-ZL-36002
200-100	ZERO LENGTH CF200-CF100 TAPPED M8	24	102	2-ZL-001002
200-160	ZERO LENGTH CF200-CF160 TAPPED M8	24	153	2-ZL-061002
250-100	ZERO LENGTH CF250-CF100 TAPPED M8	26	101,6	2-ZL-001052
250-160	ZERO LENGTH CF250-CF160 TAPPED M8	26	152,4	2-ZL-061052
250-200	ZERO LENGTH CF250-CF200 TAPPED M8	26	204,7	2-ZL-002052

## CF Nipple Reducers



Type	CF nipple reducer 304L	A	P/Number
40-16	NIPPLE REDUCER CF40 TO CF16	63,5	2-CF-3620
100-40	NIPPLE REDUCER CF100 TO CF40	127	2-CF-4620
160-40	NIPPLE REDUCER CF160 TO CF40	127	2-CF-5620
160-63	NIPPLE REDUCER CF160 TO CF63	127	2-CF-6620
160-100	NIPPLE REDUCER CF160 TO CF100	127	2-CF-7620
200-40	NIPPLE REDUCER CF200 TO CF40	127	2-CF-8620
200-63	NIPPLE REDUCER CF200 TO CF63	127	2-CF-9620
200-100	NIPPLE REDUCER CF200 TO CF100	127	2-CF-0720
200-160	NIPPLE REDUCER CF200 TO CF160	127	2-CF-1720

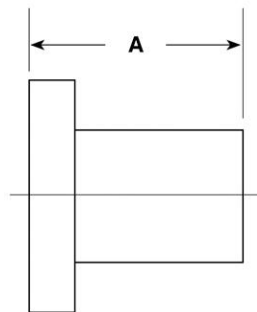
## CF Nipples Conical Reducer



Type	CF Conical Nipple Reducer 304L	A	P/Number
40-16	CF CONICAL REDUCER STANDARD	78,3	2-CF-5720
63-40	CF CONICAL REDUCER STANDARD	75	2-CF-9720
100-63	CF CONICAL REDUCER STANDARD	113	2-CF-5820

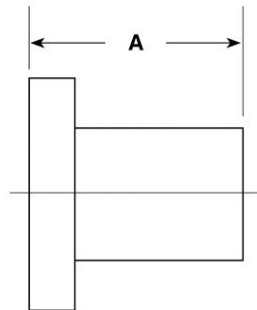
## CF Nipples

### Half nipple fixed

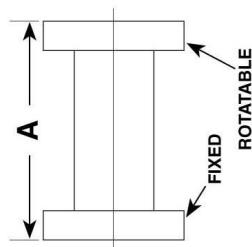


Type	Half nipple fixed 304L	A	ID	P/Number
CF16	HALF NIPPLE FIXED	38	19	2-CF-8020
CF40	HALF NIPPLE FIXED	63	38	2-CF-0120
CF63	HALF NIPPLE FIXED	86	63,5	2-CF-2120
CF100	HALF NIPPLE FIXED	109,7	101,6	2-CF-4120
CF160	HALF NIPPLE FIXED	139,7	152,4	2-CF-6120
CF200	HALF NIPPLE FIXED	203,2	203,2	2-CF-7120

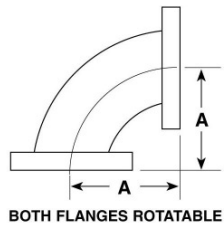
### Rotatable nipple fixed



Type	Half nipple rotatable 304L	A	ID	P/Number
CF16	HALF NIPPLE ROTATABLE	38	19	2-CF-6320
CF40	HALF NIPPLE ROTATABLE	63	38	2-CF-2420
CF63	HALF NIPPLE ROTATABLE	86	63,5	2-CF-8420
CF100	HALF NIPPLE ROTATABLE	109,7	101,6	2-CF-4520
CF160	HALF NIPPLE ROTATABLE	139,7	152,4	2-CF-0620

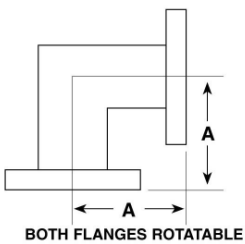


Type	CF Full Nipple 304L	A	ID	P/Number
CF16	FULL NIPPLE	76,0	19	2-CF-0220
CF40	FULL NIPPLE	125,2	38,1	2-CF-2220
CF63	FULL NIPPLE	171,7	63,5	2-CF-4220
CF63	FULL NIPPLE LONG	209,5	63,5	2-CF-5220
CF100	FULL NIPPLE	219,5	101,6	2-CF-7220
CF100	FULL NIPPLE LONG	270,0	101,6	2-CF-8220
CF160	FULL NIPPLE	279,4	152,4	2-CF-1320
CF160	FULL NIPPLE LONG	333,3	152,4	2-CF-2320
CF200	FULL NIPPLE	406,4	203,2	2-CF-3320



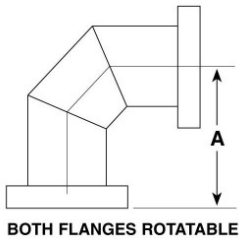
BOTH FLANGES ROTATABLE

Type	CF Elbow 90° Radius 304L	A	OD	P/Number
CF16	ELBOW 90° RADIUS	38	19	2-CF-3920
CF40	ELBOW 90° RADIUS	62	38	2-CF-5920
CF63	ELBOW 90° RADIUS	105	64	2-CF-7920
CF100	ELBOW 90° RADIUS	164	102	2-CF-9920
CF160	ELBOW 90° RADIUS	241	152	2-CF-0030



BOTH FLANGES ROTATABLE

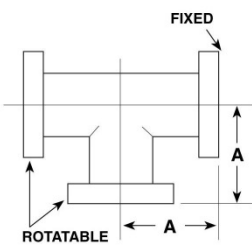
Type	CF Elbow 90° Mitered 304L	A	OD	P/Number
CF16	ELBOW 90° MITERED	38	19	2-CF-1030
CF40	ELBOW 90° MITERED	62	38	2-CF-3030
CF63	ELBOW 90° MITERED	86	64	2-CF-5030
CF63	ELBOW 90° MITERED LONG	105	64	2-CF-6030
CF100	ELBOW 90° MITERED	110	102	2-CF-8030
CF100	ELBOW 90° MITERED LONG	134,9	101,6	2-CF-9030
CF160	ELBOW 90° MITERED	139,7	152,4	2-CF-1130
CF160	ELBOW 90° MITERED LONG	166,6	152,4	2-CF-2130
CF200	ELBOW 90° MITERED	190,5	203,2	2-CF-3130



BOTH FLANGES ROTATABLE

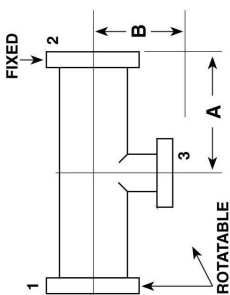
Type	CF Elbow 90° Mitered HC 304L	A	OD	P/Number
CF160	ELBOW 90° MITERED HC	241	152	2-CF-5130
CF200	ELBOW 90° MITERED HC	318	203	2-CF-6130

## CF T-Pieces



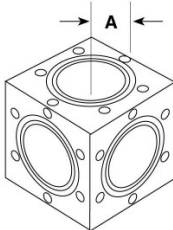
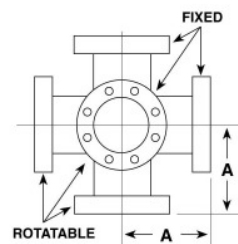
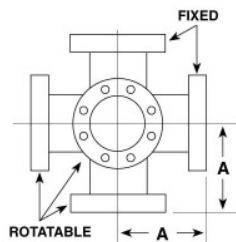
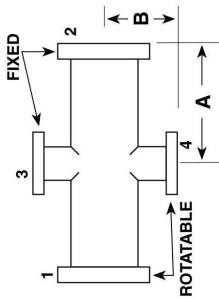
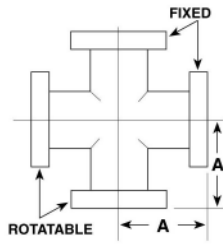
ROTATABLE

Type	CF T-Pieces 304L	A	OD	P/Number
CF16	TEE CF16 STANDARD	38	19	2-CF-8130
CF40	TEE CF40 STANDARD	63	38	2-CF-0230
CF40	TEE CF40 LONG	67	38	2-CF-1230
CF63	TEE CF63 STANDARD	86	64	2-CF-3230
CF63	TEE CF63 LONG	105	64	2-CF-4230
CF100	TEE CF100 STANDARD	110	101,6	2-CF-6230
CF100	TEE CF100 LONG	135	101,6	2-CF-7230
CF160	TEE CF160 STANDARD	140	152,4	2-CF-9230
CF160	TEE CF160 LONG	167	152,4	2-CF-0330
CF200	TEE CF200 STANDARD	181	203,2	2-CF-1330



ROTATABLE

Type	CF Reducing T-Pieces 304L	A	B	P/Number
40-16	REDUCING TEE CF40 TO CF16 A=62,5 B=47,5	62	47	2-CF-3330
63-40	REDUCING TEE CF63 TO CF40 A=85,8 B=75,2	86	75	2-CF-7330
100-40	REDUCING TEE CF100 TO CF40 A=109,7 B=94,2	110	94	2-CF-1430
100-63	REDUCING TEE CF100 TO CF63 A=63,5 B=105	110	105	2-CF-3430
160-40	REDUCING TEE CF160 TO CF40 A=139,7 B=119,6	140	120	2-CF-6430
160-63	REDUCING TEE CF160 TO CF63 A=63,5 B=130,3	139,7	130,3	2-CF-8430
160-100	REDUCING TEE CF160 TO CF100 A=101,6 B=135	139,7	135,1	2-CF-9430
200-160	REDUCING TEE CF200 TO CF160 A=180,5 B=165	190,5	165,1	2-CF-0530



Type	CF 4-Way Cross 304L	A	ID	P/Number
CF16	4 WAY CROSS STANDARD	38	19	2-CF-1530
CF40	4 WAY CROSS STANDARD	63	38	2-CF-3530
CF63	4 WAY CROSS STANDARD	86	64	2-CF-5530
CF63	4 WAY CROSS LONG	105	64	2-CF-6530
CF100	4 WAY CROSS STANDARD	110	102	2-CF-8530
CF100	4 WAY CROSS LONG	135	102	2-CF-9530
CF160	4 WAY CROSS STANDARD	140	152	2-CF-1630
CF160	4 WAY CROSS LONG	167	152	2-CF-2630
CF200	4 WAY CROSS STANDARD	181	203	2-CF-3630

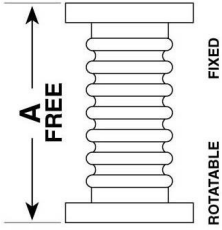
Type	CF Reducing 4 -Way Cross 304L	A	B	P/Number
40-16	REDUCING 4-WAY CF40 TO CF16 A=62,5 B=47,5	62,5	47,5	2-CF-5630
63-40	REDUCING 4-WAY CF63 TO CF40 A=85,8 B=75,2	85,8	75,2	2-CF-9630
100-40	REDUCING 4-WAY CF100 TO CF40 A=109,7 B=94,2	109,7	94,2	2-CF-3730
100-63	REDUCING 4-WAY CF100 TO CF63 A=63,5 B=105	63,5	105	2-CF-5730
160-40	REDUCING 4-WAY CF160 TO CF40 A=139,7 B=119,6	139,7	119,6	2-CF-8730
160-63	REDUCING 4-WAY CF160 TO CF63 A=63,5 B=130,3	63,5	130,3	2-CF-0830
160-100	REDUCING 4-WAY CF160 TO CF100 A=101,6 B=135	139,7	135	2-CF-1830
200-160	REDUCING 4-WAY CF200 TO CF160 A=180,5 B=165	180,5	165	2-CF-2830

Type	CF 5-Way Cross 304L	A	OD	P/Number
CF16	5 WAY CROSS CF16 A=38,1mm	38	19	2-CF-3830
CF40	5 WAY CROSS CF40 A=62,5mm	62	38	2-CF-5830
CF63	5 WAY CROSS CF63 A=85,8mm	86	64	2-CF-7830
CF63	5 WAY CROSS CF63 A=104,7mm	105	64	2-CF-8830
CF100	5 WAY CROSS CF100 A=109,7mm	110	102	2-CF-0930
CF100	5 WAY CROSS CF100 A=135mm	135	102	2-CF-1930
CF160	5 WAY CROSS CF160 A=139,7mm	140	152	2-CF-3930
CF160	5 WAY CROSS CF160 A=166,6mm	167	152	2-CF-4930
CF200	5 WAY CROSS CF200 A=180,5mm	191	203	2-CF-5930

Type	CF 6-Way Cross 304L	A	OD	P/Number
CF16	6 WAY CROSS STANDARD	38	19	2-CF-7930
CF40	6 WAY CROSS STANDARD	62	38	2-CF-9930
CF63	6 WAY CROSS STANDARD	86	64	2-CF-1040
CF63	6 WAY CROSS LONG	105	64	2-CF-2040
CF100	6 WAY CROSS STANDARD	110	102	2-CF-4040
CF100	6 WAY CROSS LONG	134,9	102	2-CF-5040
CF160	6 WAY CROSS STANDARD	139,7	152	2-CF-7040
CF160	6 WAY CROSS LONG	166,6	152	2-CF-8040
CF200	6 WAY CROSS STANDARD	190,5	203	2-CF-9040

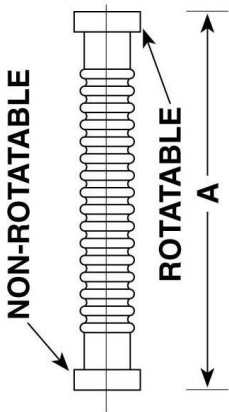
Type	CF 6-Way Cube 304L	A	P/Number
CF16	6-WAY CUBE NO WELDS	17	2-CF-1140
CF40	6-WAY CUBE NO WELDS	35	2-CF-2140
CF63	6-WAY CUBE NO WELDS	57	2-CF-4140
CF100	6-WAY CUBE NO WELDS	76	2-CF-5140
CF160	6-WAY CUBE NO WELDS	101	2-CF-6140
CF200	6-WAY CUBE NO WELDS	127	2-CF-7140





Type	CF Flexible Coupling 304L/321	A	P/Number
CF16	CF FLEXIBLE COUPLING EXTENTION +20% / -15% FREE LENGTH	102	2-CF-7050
CF40	CF FLEXIBLE COUPLING EXTENTION +20% / -15% FREE LENGTH	102	2-CF-8050
CF63	CF FLEXIBLE COUPLING EXTENTION +20% / -15% FREE LENGTH	152	2-CF-9050
CF100	CF FLEXIBLE COUPLING EXTENTION +20% / -15% FREE LENGTH	152	2-CF-0150
CF160	CF FLEXIBLE COUPLING EXTENTION +20% / -15% FREE LENGTH	203	2-CF-1150

## CF Flexible Bellows



Type	CF Flexible Metal Hose 316L/321	A	P/Number
CF16	CF FLEXIBLE METAL HOSE	250	2-CF-7350
CF40	CF FLEXIBLE METAL HOSE	250	2-CF-8350
CF63	CF FLEXIBLE METAL HOSE	250	2-CF-9350
CF16	CF FLEXIBLE METAL HOSE	500	2-CF-0450
CF40	CF FLEXIBLE METAL HOSE	500	2-CF-1450
CF63	CF FLEXIBLE METAL HOSE	500	2-CF-2450
CF16	CF FLEXIBLE METAL HOSE	750	2-CF-3450
CF40	CF FLEXIBLE METAL HOSE	750	2-CF-4450
CF63	CF FLEXIBLE METAL HOSE	750	2-CF-5450
CF16	CF FLEXIBLE METAL HOSE	1000	2-CF-6450
CF40	CF FLEXIBLE METAL HOSE	1000	2-CF-7450
CF63	CF FLEXIBLE METAL HOSE	1000	2-CF-8450

## CF Edge Welded Bellows

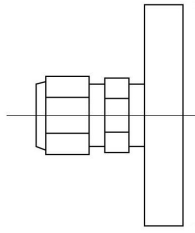


### Description

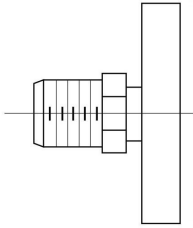
We supply highly flexible edge welded bellows with a long lifetime. The bellows are manufactured out of high quality stainless steel grade AM350.

You can choose between weldable ends, CF, KF or LF endings. Standard inner diameters vary from 6 to 250 mm. Different designs are possible on request.

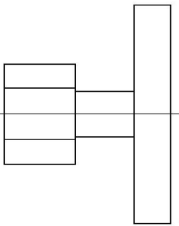
Please contact us to discuss the individual solution for your application.



Type	CF Flange with Swagelok adapter 304L/316	Size	P/Number
CF16	ADAPTER CF16 TO SWG 1/4"	1/4"	2-CF-1440
CF16	ADAPTER CF16 TO SWG 1/3"	1/3"	2-CF-2440
CF16	ADAPTER CF16 TO SWG 1/2"	1/2"	2-CF-3440
CF40	ADAPTER CF40 TO SWG 1/4"	1/4"	2-CF-4440
CF40	ADAPTER CF40 TO SWG 1/3"	1/3"	2-CF-5440
CF40	ADAPTER CF40 TO SWG 1/2"	1/2"	2-CF-6440
CF40	ADAPTER CF40 TO SWG 3/4"	3/4"	2-CF-7440
CF40	ADAPTER CF40 TO SWG 1"	1"	2-CF-8440



Type	CF Flange with VCR Male Adapter 304L/316	Size	P/Number
CF16	ADAPTER CF16 TO VCR MALE 1/4"	1/4"	2-CF-9440
CF16	ADAPTER CF16 TO VCR MALE 3/8"	3/8"	2-CF-0540
CF40	ADAPTER CF40 TO VCR MALE 1/4"	1/4"	2-CF-1540
CF40	ADAPTER CF40 TO VCR MALE 3/8"	3/8"	2-CF-2540
CF40	ADAPTER CF40 TO VCR MALE 1/2"	1/2"	2-CF-3540



Type	CF Flange with VCR Female Adapter 304L/316	Size	P/Number
CF16	ADAPTER CF16 TO VCR FEMALE 1/4"	1/4"	2-CF-4540
CF16	ADAPTER CF16 TO VCR FEMALE 3/8"	3/8"	2-CF-5540
CF40	ADAPTER CF40 TO VCR FEMALE 1/4"	1/4"	2-CF-6540
CF40	ADAPTER CF40 TO VCR FEMALE 3/8"	3/8"	2-CF-7540
CF40	ADAPTER CF40 TO VCR FEMALE 1/2"	1/2"	2-CF-8540

## Description

We supply flanges and fittings in standard KF-(Quick-flange) design. Standard flange sizes vary from KF16 to KF50 and are sealed with a centering ring/o-ring-combination and a standard clamp on the outside that covers the connection. Depending on the application Viton, Buna or Silicone can be supplied as sealing material.

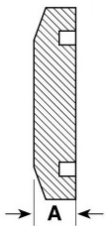
Outside centering rings can be supplied on request.

The parts are manufactured out of stainless steel 304 (1.4301), other materials on request or where stated.

Please contact our sales office if you are looking for any further flange designs, configurations or a customized versions.

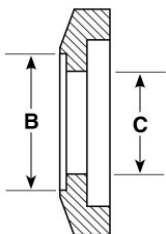


## KF Blank Flanges

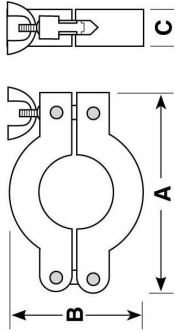


Type	KF Blank Flanges Stainless Stees	A	P/Number
KF16	STAINLESS STEEL BLANK FLANGE	5	2-KF-0711
KF25	STAINLESS STEEL BLANK FLANGE	5	2-KF-1711
KF40	STAINLESS STEEL BLANK FLANGE	5	2-KF-2711
KF50	STAINLESS STEEL BLANK FLANGE	5	2-KF-3711

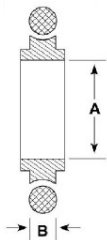
## KF Bored Flanges



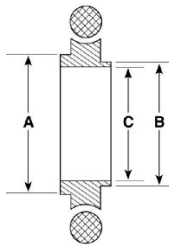
Type	KF Bored Flanges Stainless Stees	B	C	P/Number
KF16	STAINLESS STEEL BORED FLANGE	20	16	2-KF-8751
KF25	STAINLESS STEEL BORED FLANGE	28	24	2-KF-9751
KF40	STAINLESS STEEL BORED FLANGE	45	41	2-KF-0851
KF50	STAINLESS STEEL BORED FLANGE	57	50	2-KF-1851



Type	KF Standard Clamp Aluminium	A	B	C	P/Number
16	KF STANDARD CLAMP ALUMINIUM	62	43	16	2-KF-0101
20-25	KF STANDARD CLAMP ALUMINIUM	72	55	16	2-KF-1101
32-40	KF STANDARD CLAMP ALUMINIUM	90	70	16	2-KF-2101
50	KF STANDARD CLAMP ALUMINIUM	123	95	25	2-KF-3101

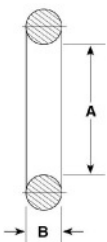


Type	SS Centering Ring with Viton O-ring	A	B	P/Number
KF16	KF CENTERING RING SS/VITON	16	3,9	2-KF-1501
KF25	KF CENTERING RING SS/VITON	25	3,9	2-KF-2501
KF40	KF CENTERING RING SS/VITON	40	3,9	2-KF-3501
KF50	KF CENTERING RING SS/VITON	50	3,9	2-KF-4501



Type	Aluminium Centering Ring with Viton O-ring	A	B	P/Number
KF16	KF CENTERING RING ALU/VITON	16	3,9	2-KF-6601
KF25	KF CENTERING RING ALU/VITON	25	3,9	2-KF-7601
KF40	KF CENTERING RING ALU/VITON	40	3,9	2-KF-8601
KF50	KF CENTERING RING ALU/VITON	50	3,9	2-KF-9601

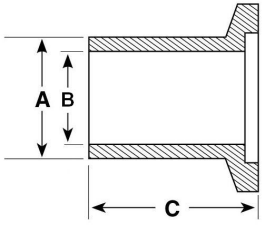
Type	Reducing SS Centering Ring with Viton	A	B	C	P/Number
16	KF REDUCUNG CENTERING RING SS/VITON	17	12	10	2-KF-0011
20-25	KF REDUCING CENTERING RING SS/VITON	26	22	21	2-KF-1011
32-40	KF REDUCING CENTERING RING SS/VITON	41	34	32	2-KF-2011



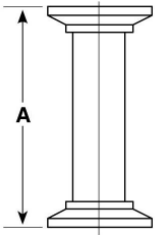
Type	Replacement Viton O-Ring	A	B	Qty	P/Number
KF16	REPLACEMENT VITON O-RING	18	5	5	2-KF-2111
KF25	REPLACEMENT VITON O-RING	28	5	5	2-KF-3111
KF40	REPLACEMENT VITON O-RING	42	5	5	2-KF-4111
KF50	REPLACEMENT VITON O-RING	52	5	5	2-KF-5111

Type	Replacement Buna O-Ring	A	B	Qty	P/Number
KF16	REPLACEMENT BUNA O-RING	18	5	1	2-KF-2211
KF25	REPLACEMENT BUNA O-RING	28	5	1	2-KF-3211
KF40	REPLACEMENT BUNA O-RING	42	5	1	2-KF-4211
KF50	REPLACEMENT BUNA O-RING	52	5	1	2-KF-5211

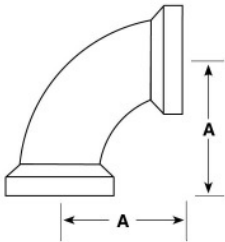
Type	Replacement Silicone O-Ring	A	B	Qty	P/Number
KF16	REPLACEMENT SILICONE O-RING	18	5	1	2-KF-7111
KF25	REPLACEMENT SILICONE O-RING	28	5	1	2-KF-8111
KF40	REPLACEMENT SILICONE O-RING	42	5	1	2-KF-9111
KF50	REPLACEMENT SILICONE O-RING	52	5	1	2-KF-0211



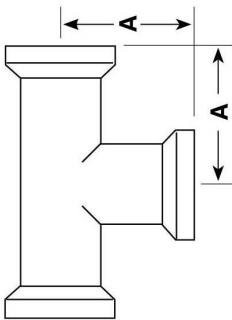
Type	KF Short Weld Flange Stainless Steel	A	B	C	P/Number
KF16	SHORT WELD FLANGE	20	16	30	2-KF-1651
KF25	SHORT WELD FLANGE	28	24	30	2-KF-2651
KF40	SHORT WELD FLANGE	45	41	30	2-KF-3651
KF50	SHORT WELD FLANGE	57	50	30	2-KF-4651
KF16	LONG WELD FLANGE	20	16	70	2-KF-1551
KF25	LONG WELD FLANGE	28	24	70	2-KF-3451
KF40	LONG WELD FLANGE	45	41	70	2-KF-2551
KF50	LONG WELD FLANGE	57	50	70	2-KF-3551



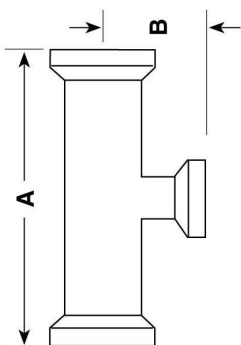
Type	KF Full Nipple Stainless Steel	A	P/Number
KF16	KF FULL NIPPLE	80	2-KF-2851
KF25	KF FULL NIPPLE	100	2-KF-3851
KF40	KF FULL NIPPLE	130	2-KF-4851
KF50	KF FULL NIPPLE	140	2-KF-5851



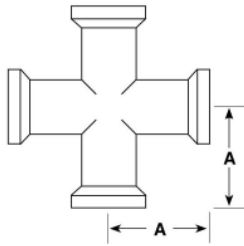
Type	KF Elbow 90° Stainless Steel	A	P/Number
KF16	KF ELBOW 90°	40	2-KF-3521
KF25	KF ELBOW 90°	50	2-KF-4521
KF40	KF ELBOW 90°	65	2-KF-5521
KF50	KF ELBOW 90°	81	2-KF-6521



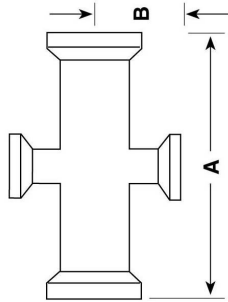
Type	KF T-Piece Stainless Steel	A	P/Number
KF16	KF T-PIECE	40	2-KF-1269
KF25	KF T-PIECE	50	2-KF-1270
KF40	KF T-PIECE	65	2-KF-1271
KF50	KF T-PIECE	70	2-KF-1272



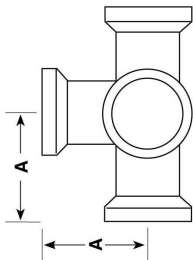
Type	KF Reducing T-Piece Stainless Steel	A	B	P/Number
25-25-16	KF REDUCING T-PIECE 25-25-16	100	43	2-KF-3721
40-40-16	KF REDUCING T-PIECE 40-40-16	130	50	2-KF-4721
40-40-25	KF REDUCING T-PIECE 40-40-25	130	56	2-KF-5721
50-50-16	KF REDUCING T-PIECE 50-50-16	140	56	2-KF-6721
50-50-25	KF REDUCING T-PIECE 50-50-25	140	63	2-KF-7721
50-50-40	KF REDUCING T-PIECE 50-50-40	140	71,37	2-KF-8721



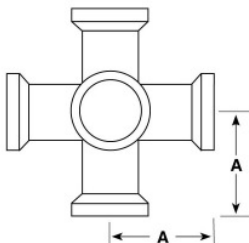
Type	KF 4-Way Cross Stainless Steel	A	P/Number
KF16	KF 4-WAY CROSS	40	2-KF5821
KF25	KF 4-WAY CROSS	50	2-KF-6821
KF40	KF 4-WAY CROSS	65	2-KF-7821
KF50	KF 4-WAY CROSS	70	2-KF-8821



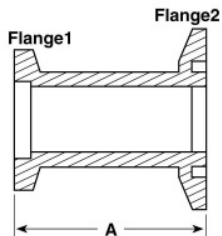
Type	KF Reducing 4-Way Cross Stainless Steel	A	P/Number
KF16	KF REDUCING 4-WAY CROSS	100,1	2-KF-9721
KF25	KF REDUCING 4-WAY CROSS	130	2-KF-0821
KF40	KF REDUCING 4-WAY CROSS	130	2-KF-1821
KF50	KF REDUCING 4-WAY CROSS	140	2-KF-2821



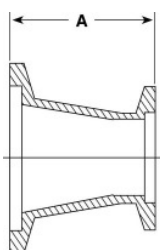
Type	KF 5-Way Cross Stainless Steel	A	P/Number
KF16	KF 5-WAY CROSS	52	2-KF-9821
KF25	KF 5-WAY CROSS	81	2-KF-0921
KF40	KF 5-WAY CROSS	38	2-KF-1921
KF50	KF 5-WAY CROSS	61	2-KF-2921



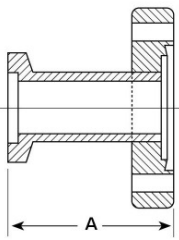
Type	KF 6-Way Cross Stainless Steel	A	P/Number
KF16	KF 6-WAY CROSS	40	2-KF-3921
KF25	KF 6-WAY CROSS	52	2-KF-4921
KF40	KF 6-WAY CROSS	61	2-KF-5921
KF50	KF 6-WAY CROSS	70	2-KF-2451



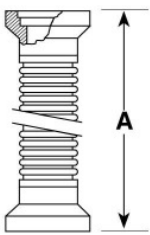
Type	KF Reducing Pieces Stainless Steel	A	P/Number
25-16	KF REDUCING PIECE 25-16	28	2-KF-1221
40-16	KF REDUCING PIECE 40-16	28	2-KF-2221
40-25	KF REDUCING PIECE 40-25	28	2-KF-4221
50-25	KF REDUCING PIECE 50-25	28	2-KF-6851
50-40	KF REDUCING PIECE 50-40	28	2-KF-7851



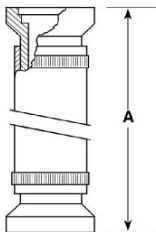
Type	KF Conical Reducing Pieces Stainless Steel	A	P/Number
25-16	KF CONICAL REDUCING PIECE 25-16	40	2-KF-8851
40-16	KF CONICAL REDUCING PIECE 40-16	40	2-KF-9851
40-25	KF CONICAL REDUCING PIECE 40-25	40	2-KF-0951



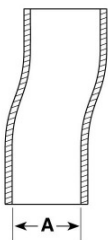
Type	Adapter KF to CF	A	P/Number
16-16	ADAPTER KF16-CF16	36	2-KF-7951
16-40	ADAPTER KF16 TO CF40	45	2-KF-3001
25-16	ADAPTER KF25-CF16	36	2-KF-8951
25-40	ADAPTER KF25-CF40	36	2-KF-9951
40-40	ADAPTER KF40-CF40	50	2-KF-0061
40-63	ADAPTER KF40-CF63	50	2-KF-1061
40-100	ADAPTER KF40-CF100	50	2-KF-2061
50-16	ADAPTER KF50 TO CF16	50	2-KF-8001
50-40	ADAPTER KF50 TO CF40	50	2-KF-9001



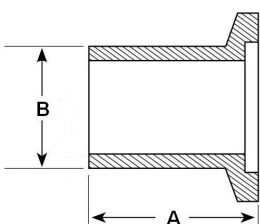
Type	KF Flexible Metal Bellows Stainless Steel	A	P/Number
KF16	FLEX METAL HOSE KF16	250	2-KF-9151
KF25	FLEX METAL HOSE KF25	250	2-KF-0251
KF40	FLEX METAL HOSE KF40	250	2-KF-1251
KF50	FLEX METAL HOSE KF50	250	2-KF-2251
KF16	FLEX METAL HOSE KF16	500	2-KF-4251
KF25	FLEX METAL HOSE KF25	500	2-KF-5251
KF40	FLEX METAL HOSE KF40	500	2-KF-6251
KF50	FLEX METAL HOSE KF50	500	2-KF-7251
KF16	FLEX METAL HOSE KF16	750	2-KF-9251
KF25	FLEX METAL HOSE KF25	750	2-KF-0351
KF40	FLEX METAL HOSE KF40	750	2-KF-1351
KF50	FLEX METAL HOSE KF50	750	2-KF-2351
KF16	FLEX METAL HOSE KF16	1000	2-KF-4351
KF25	FLEX METAL HOSE KF25	1000	2-KF-5351
KF40	FLEX METAL HOSE KF40	1000	2-KF-6351
KF50	FLEX METAL HOSE KF50	1000	2-KF-7351



Type	KF PVC Hose Complete (Aluminium/PVC)	A	P/Number
KF16	KF PVC HOSE (STEEL SPIRAL) WITH KF FLANGES	500	2-KF-1951
KF25	KF PVC HOSE (STEEL SPIRAL) WITH KF FLANGES	500	2-KF-2751
KF40	KF PVC HOSE (STEEL SPIRAL) WITH KF FLANGES	500	2-KF-3751
KF16	KF PVC HOSE (STEEL SPIRAL) WITH KF FLANGES	1000	2-KF-2951
KF25	KF PVC HOSE (STEEL SPIRAL) WITH KF FLANGES	1000	2-KF-4751
KF40	KF PVC HOSE (STEEL SPIRAL) WITH KF FLANGES	1000	2-KF-5751



Type	PVC Hose with Steel Spiral (1 metre)	A	P/Number
DN16	PVC HOSE WITH STEEL SPIRAL	16	2-KF-3951
DN25	PVC HOSE WITH STEEL SPIRAL	25	2-KF-4851
DN40	PVC HOSE WITH STEEL SPIRAL	40	2-KF-4951



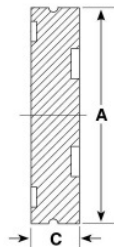
Type	KF Aluminium Flange for PVC Hose	A	B	P/Number
KF16	KF Flange for PVC Hose	30	18	2-KF-5951
KF25	KF Flange for PVC Hose	30	27	2-KF-9451
KF40	KF Flange for PVC Hose	30	43	2-KF-6951

**Description**

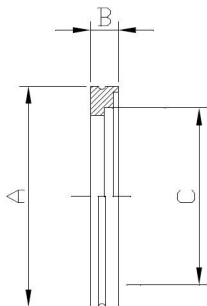
We supply flanges and fittings in standard LF-(Large flange) design. Standard flange sizes vary from LF63 to LF630 and are sealed with with a centering ring/o-ring-combination and claw clamps on the outside. As an alternative we supply these flanges sealed with a bolt kit, ISO-F style, as well.

The parts are manufactured out of stainless steel 304 (1.4301), other materials on request or where stated.

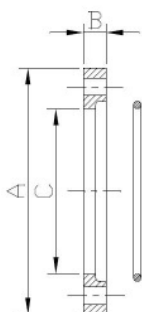
Please contact our sales office if you are looking for any further flange designs, configurations or a customized versions



Type	ISO-K (LF) Blank Flanges Stainless Steel	A	C	P/Number
LF63	BLANK FLANGE CLAMP STYLE	95	12	2-LF-1212
LF100	BLANK FLANGE CLAMP STYLE	130	12	2-LF-3212
LF160	BLANK FLANGE CLAMP STYLE	180	12	2-LF-4212
LF200	BLANK FLANGE CLAMP STYLE	240	12	2-LF-5212
LF250	BLANK FLANGE CLAMP STYLE	290	12	2-LF-6212
LF320	BLANK FLANGE CLAMP STYLE	370	17	2-LF-7212
LF400	BLANK FLANGE CLAMP STYLE	450	17	2-LF-8212
LF500	BLANK FLANGE CLAMP STYLE	550	17	2-LF-9212
LF630	BLANK FLANGE CLAMP STYLE	690	12	2-LF-1922

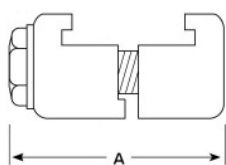


Type	ISO-K (LF) Weld Flanges Stainless Steel	A	B	C	P/Number
LF63	WELD FLANGE CLAMP STYLE	95	12	76,5	2-LF-8802
LF100	WELD FLANGE CLAMP STYLE	130	12	108,5	2-LF-0902
LF160	WELD FLANGE CLAMP STYLE	180	12	159,5	2-LF-1902
LF200	WELD FLANGE CLAMP STYLE	240	12	219,5	2-LF-2902
LF250	WELD FLANGE CLAMP STYLE	290	12	267,5	2-LF-3902
LF320	WELD FLANGE CLAMP STYLE	370	17	324,5	2-LF-4902
LF400	WELD FLANGE CLAMP STYLE	450	17	407	2-LF-5902
LF500	WELD FLANGE CLAMP STYLE	550	17	509	2-LF-6902
LF630	WELD FLANGE CLAMP STYLE	690	12	661	2-LF-1822

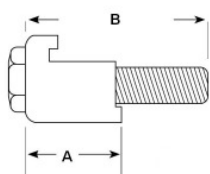


Type	ISO-K (LF) Rot. Weld Flanges Stainl. St.	A	B	C	P/Number
LF63	ROTATABLE WELD FLANGE BOLT STYLE	130	12	95,5	2-LF-2922
LF100	ROTATABLE WELD FLANGE BOLT STYLE	165	12	130,5	2-LF-3922
LF160	ROTATABLE WELD FLANGE BOLT STYLE	225	16	180,7	2-LF-4922
LF200	ROTATABLE WELD FLANGE BOLT STYLE	285	16	240,7	2-LF-5922
LF250	ROTATABLE WELD FLANGE BOLT STYLE	335	16	290,7	2-LF-6922
LF320	ROTATABLE WELD FLANGE BOLT STYLE	425	20	370,8	2-LF-7922
LF400	ROTATABLE WELD FLANGE BOLT STYLE	510	20	451	2-LF-8922
LF500	ROTATABLE WELD FLANGE BOLT STYLE	610	20	551	2-LF-9922
LF630	ROTATABLE WELD FLANGE BOLT STYLE	750	24	691	2-LF-0032





Type	ISO-K Double Claw Clamps	A	P/Number
63-250	DOUBLE CLAW ZINC PLATED	60	2-LF-0002
320-500	DOUBLE CLAW ZINC PLATED	75	2-LF-2002
630	DOUBLE CLAW ZINC PLATED	85	2-LF-1002
63-250	DOUBLE CLAW STAINLESS STEEL	60	2-LF-1032
350-630	DOUBLE CLAW STAINLESS STEEL	75	2-LF-2032



Type	ISO-K (LF) Single Claw Clamps	A	B	P/Number
63-100	SINGLE CLAW CLAMP ZINC PLATED M8	22,5	35	2-LF-3002
160-25	SINGLE CLAW CLAMP ZINC PLATED M10	23	35	2-LF-4002
320-500	SINGLE CLAW CLAMP ZINC PLATED M12	36,5	50	2-LF-5002
63-100	SINGLE CLAW CLAMP STAINLESS STEEL M8	22,5	35	2-LF-3032
160-250	SINGLE CLAW CLAMP STAINLESS STEEL M10	23	35	2-LF-4032
320-500	SINGLE CLAW CLAMP STAINLESS STEEL M12	36,5	50	2-LF-5032
630	SINGLE CLAW CLAMP STAINLESS STEEL M12	41,5	50	2-LF-5722



Type	ISO-K (LF) Centering Ring Stainless Steel/Viton	A	B	P/Number
LF63	CENTERING RING STAINLESS STEEL/VITON	67	3,9	2-LF-4202
LF100	CENTERING RING STAINLESS STEEL/VITON	99	3,9	2-LF-0302
LF160	CENTERING RING STAINLESS STEEL/VITON	150	3,9	2-LF3302
LF200	CENTERING RING STAINLESS STEEL/VITON	210	3,9	2-LF-6302
LF250	CENTERING RING STAINLESS STEEL/VITON	258	3,9	2-LF-9302
LF320	CENTERING RING STAINLESS STEEL/VITON	313	5,6	2-LF-2402
LF400	CENTERING RING STAINLESS STEEL/VITON	395	5,6	2-LF-5402
LF500	CENTERING RING STAINLESS STEEL/VITON	495	4,6	2-LF-8402
LF630	CENTERING RING STAINLESS STEEL/VITON	645	5,6	2-LF-6032

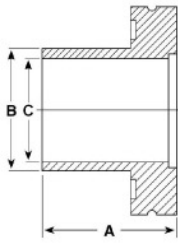


Type	ISO-K (LF) Centering Ring Aluminium/Viton	A	B	P/Number
LF63	CENTERING RING ALUMINIUM/VITON	67	3,9	2-LF-1502
LF100	CENTERING RING ALUMINIUM/VITON	99	3,9	2-LF-7502
LF160	CENTERING RING ALUMINIUM/VITON	150	3,9	2-LF-0602
LF200	CENTERING RING ALUMINIUM/VITON	210	3,9	2-LF-7032
LF250	CENTERING RING ALUMINIUM/VITON	258	3,9	2-LF-8032
LF320	CENTERING RING ALUMINIUM/VITON	313	5,6	2-LF-9032
LF400	CENTERING RING ALUMINIUM/VITON	395	5,6	2-LF-0132
LF500	CENTERING RING ALUMINIUM/VITON	495	4,6	2-LF-1132
LF630	CENTERING RING ALUMINIUM/VITON	645	5,6	2-LF-2132

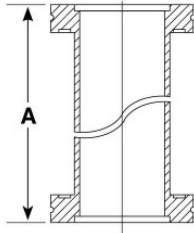


Type	ISO-K (LF) Replacement Viton O-ring	A	B	P/Number
LF63	REPLACEMENT VITON O-RING	76	5,3	2-LF-0802
LF100	REPLACEMENT VITON O-RING	107	5,3	2-LF-6722
LF160	REPLACEMENT VITON O-RING	158	5,3	2-LF-2802
LF200	REPLACEMENT VITON O-RING	209	5,3	2-LF-3802
LF250	REPLACEMENT VITON O-RING	253	5,3	2-LF-4802
LF320	REPLACEMENT VITON O-RING	330	7	2-LF-5802
LF400	REPLACEMENT VITON O-RING	405	7	2-LF-6802
LF500	REPLACEMENT VITON O-RING	507	7	2-LF-7802
LF630	REPLACEMENT VITON O-RING	659	7	2-LF-9822

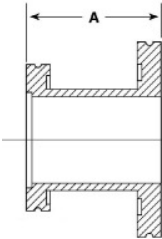
## ISO-K (LF) Fittings



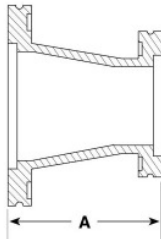
Type	ISO-K (LF) Half Nipple	A	B	C	P/Number
LF63	HALF NIPPLE	100	76	70	2-LF-7512
LF100	HALF NIPPLE	100	108	102	2-LF-2822
LF160	HALF NIPPLE	100	159	153	2-LF-0612
LF200	HALF NIPPLE	100	219	213	2-LF-3822
LF250	HALF NIPPLE	100	267	261	2-LF-4822
LF320	HALF NIPPLE	100	324	218	2-LF-5822
LF400	HALF NIPPLE	100	408	400	2-LF-6822
LF500	HALF NIPPLE	100	508	500	2-LF-7822
LF630	HALF NIPPLE	100	660	650	2-LF-8822



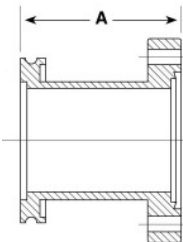
Type	ISO-K (LF) Full Nipple	A	P/Number
LF63	FULL NIPPLE	100	2-LF-3132
LF100	FULL NIPPLE	100	2-LF-4132
LF160	FULL NIPPLE	100	2-LF-5132
LF200	FULL NIPPLE	100	2-LF-6132
LF250	FULL NIPPLE	100	2-LF-7132



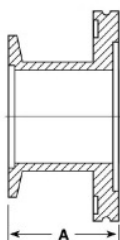
Type	ISO-K (LF) Reducing Nipples LF/LF	A	P/Number
100-63	REDUCING NIPPLE LF/LF	50	2-LF-5912
160-100	REDUCING NIPPLE LF/LF	50	2-LF-9232
200-160	REDUCING NIPPLE LF/LF	50	2-LF-0922
250-200	REDUCING NIPPLE LF/LF	50	2-LF-0332



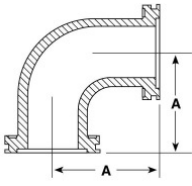
Type	ISO-K (LF) Conical Reducer LF/LF	A	P/Number
100-63	CONICAL REDUCER LF/LF	100	2-LF-1332
160-100	CONICAL REDUCER LF/LF	120	2-LF-2332
200-160	CONICAL REDUCER LF/LF	140	2-LF-3332
250-200	CONICAL REDUCER LF/LF	160	2-LF-4332



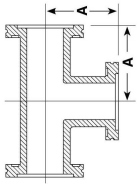
Type	Adapter ISO-K (LF) to CF	A	P/Number
63-63	ADAPTER LF63 -CF63	110	2-LF-5332
100-100	ADAPTER LF100 -CF100	111	2-LF-6332
160-160	ADAPTER LF160 -CF160	113	2-LF-7332
200-200	ADAPTER LF200 -CF200	113	2-LF-8332



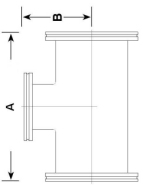
Type	Adapter ISO-K (LF) to KF	A	P/Number
63-16	ADAPTER LF63-KF16	45	2-KF-6221
63-25	ADAPTER LF63-KF25	40	2-KF-0361
63-40	ADAPTER LF63-KF40	40	2-KF-5651
100-25	ADAPTER LF100-KF25	45	2-KF-9221
100-40	ADAPTER LF100-KF40	40	2-KF-9651
100-50	ADAPTER LF100-KF50	40	2-KF-0751
160-40	ADAPTER LF160-KF40	40	2-KF-4061
160-50	ADAPTER LF160-KF50	45	2-KF-1321



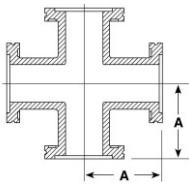
Type	ISO-K (LF) Elbow 90°	A	P/Number
LF63	ELBOW 90°	88	2-LF-9022
LF100	ELBOW 90°	108	2-LF-1122
LF160	ELBOW 90°	138	2-LF-2122
LF200	ELBOW 90°	178	2-LF-8132
LF250	ELBOW 90°	208	2-LF-9132



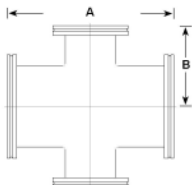
Type	ISO-K (LF) T-Pieces	A	P/Number
LF63	T-PIECES	88	2-LF-0232
LF100	T-PIECES	108	2-LF-1232
LF160	T-PIECES	138	2-LF-2232
LF200	T-PIECES	178	2-LF-3232
LF250	T-PIECES	208	2-LF-4232



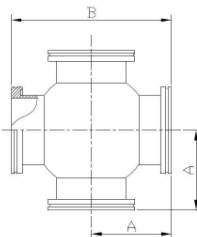
Type	ISO-K (LF) Reducing T-Pieces	A	B	P/Number
100-63	REDUCING T-PIECES	216	100	2-LF-5232
160-100	REDUCING T-PIECES	276	130	2-LF-6232
200-160	REDUCING T-PIECES	356	160	2-LF-7232
250-200	REDUCING T-PIECES	416	190	2-LF-8232



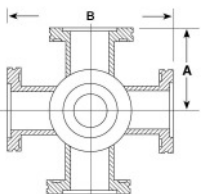
Type	ISO-K (LF) 4-Way Cross	A	P/Number
LF63	4-WAY CROSS	88	2-LF-9332
LF100	4-WAY CROSS	108	2-LF-6522
LF160	4-WAY CROSS	138	2-LF-0432
LF200	4-WAY CROSS	178	2-LF-1432
LF250	4-WAY CROSS	208	2-LF-2432



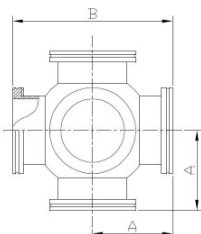
Type	ISO-K (LF) Reducing 4-Way Cross	A	B	P/Number
100-63	REDUCING 4-WAY CROSS	216	100	2-LF-3432
160-100	REDUCING 4-WAY CROSS	276	130	2-LF-4432
200-160	REDUCING 4-WAY CROSS	356	160	2-LF-5432
250-200	REDUCING 4-WAY CROSS	416	190	2-LF-6432



Type	ISO-K (LF) Spherical Body 4-Way Cross	A	B	P/Number
LF63	SPHERICAL 4-WAY CROSS	88	176	2-LF-7432
LF100	SPHERICAL 4-WAY CROSS	108	216	2-LF-8432
LF160	SPHERICAL 4-WAY CROSS	138	276	2-LF-9432
LF200	SPHERICAL 4-WAY CROSS	178	356	2-LF-0532
LF250	SPHERICAL 4-WAY CROSS	208	416	2-LF-1532



Type	ISO-K (LF) 6-Way Cross	A	B	P/Number
LF63	6-WAY CROSS	88	176	2-LF-2532
LF100	6-WAY CROSS	108	216	2-LF-3532
LF160	6-WAY CROSS	138	276	2-LF-4532
LF200	6-WAY CROSS	178	356	2-LF-5532
LF250	6-WAY CROSS	208	416	2-LF-6532



Type	ISO-K (LF) Spherical Body 6-Way Cross	A	B	P/Number
LF63	SPHERICAL 6-WAY CROSS	88	176	2-LF-7532
LF100	SPHERICAL 6-WAY CROSS	108	216	2-LF-8532
LF160	SPHERICAL 6-WAY CROSS	138	276	2-LF-9532
LF200	SPHERICAL 6-WAY CROSS	178	356	2-LF-0632
LF250	SPHERICAL 6-WAY CROSS	208	416	2-LF-1632

## Liquid Feedthroughs

Type	CF Standard Fluid FT	A	B	C	D	End	Tube	Dwg	P/Number
CF16	CF FEEDTHROUGH - 1 TUBE	121	76	-	-	SWG	1/4"	B	1-LF-2010
CF16	CF FEEDTHROUGH - 1 TUBE	121	76	-	-	VCR Male	1/4"	B	1-LF-3010
CF40	CF FEEDTHROUGH - 1 TUBE	121	76	-	-	SWG	1/4"	B	1-LF-4010
CF40	CF FEEDTHROUGH - 1 TUBE	121	76	-	-	VCR Male	1/4"	B	1-LF-5010
CF40	CF FEEDTHROUGH - 2 TUBE	121	76	79	118	SWG	1/4"	E	1-LF-4110
CF40	CF FEEDTHROUGH - 2 TUBE	121	76	79	118	VCR Male	1/4"	E	1-LF-5110

Type	KF Standard Fluid FT	A	B	C	D	End	Tube	Dwg	P/Number
KF16	KF FEEDTHROUGH - 1 TUBE	121	76	-	-	SWG	1/4"	A	1-LF-6010
KF16	KF FEEDTHROUGH - 1 TUBE	121	76	-	-	VCR Male	1/4"	A	1-LF-7010
KF25	KF FEEDTHROUGH - 1 TUBE	121	76	-	-	SWG	1/4"	A	1-LF-8010
KF25	KF FEEDTHROUGH - 1 TUBE	121	76	-	-	VCR Male	1/4"	A	1-LF-9010
KF40	KF FEEDTHROUGH - 1 TUBE	121	76	-	-	SWG	1/4"	A	1-LF-0110
KF40	KF FEEDTHROUGH - 1 TUBE	121	76	-	-	VCR Male	1/4"	A	1-LF-1110
KF40	KF FEEDTHROUGH - 2 TUBE	121	76	79	118	SWG	1/4"	D	1-LF-6110
KF40	KF FEEDTHROUGH - 2 TUBE	121	76	79	118	VCR Male	1/4"	D	1-LF-7110
KF50	KF FEEDTHROUGH - 1 TUBE	121	76	-	-	SWG	1/4"	A	1-LF-2110
KF50	KF FEEDTHROUGH - 1 TUBE	121	76	-	-	VCR Male	1/4"	A	1-LF-3110
KF50	KF FEEDTHROUGH - 2 TUBE	121	76	79	118	SWG	1/4"	D	1-LF-8110
KF50	KF FEEDTHROUGH - 2 TUBE	121	76	79	118	VCR Male	1/4"	D	1-LF-9110

Type	CF Cryogenic Fluid FT	A	B	C	D	End	Tube	Dwg	P/Number
CF16	CF FEEDTHROUGH - 1 TUBE	150	76	-	-	SWG	1/4"	B	1-LF-2020
CF16	CF FEEDTHROUGH - 1 TUBE	150	76	-	-	VCR Male	1/4"	B	1-LF-3020
CF40	CF FEEDTHROUGH - 1 TUBE	150	76	-	-	SWG	1/4"	B	1-LF-4020
CF40	CF FEEDTHROUGH - 1 TUBE	150	76	-	-	VCR Male	1/4"	B	1-LF-5020
CF40	CF FEEDTHROUGH - 2 TUBE	150	76	108	118	SWG	1/4"	E	1-LF-0210
CF40	CF FEEDTHROUGH - 2 TUBE	150	76	108	118	VCR Male	1/4"	E	1-LF-1210

Type	KF Cryogenic Fluid FT	A	B	C	D	End	Tube	Dwg	P/Number
KF16	KF FEEDTHROUGH - 1 TUBE	151	75	-	-	SWG	1/4"	A	1-LF-6020
KF16	KF FEEDTHROUGH - 1 TUBE	151	77	-	-	VCR Male	1/4"	A	1-LF7020
KF25	KF FEEDTHROUGH - 1 TUBE	148	77	-	-	SWG	1/4"	A	1-LF-8020
KF25	KF FEEDTHROUGH - 1 TUBE	148	77	-	-	VCR Male	1/4"	A	1-LF-9020
KF40	KF FEEDTHROUGH - 1 TUBE	148	77	-	-	SWG	1/4"	A	1-LF-0120
KF40	KF FEEDTHROUGH - 1 TUBE	148	77	-	-	VCR Male	1/4"	A	1-LF-1120
KF40	KF FEEDTHROUGH - 2 TUBE	148	77	107	119	SWG	1/4"	D	1-LF-2210
KF40	KF FEEDTHROUGH - 2 TUBE	148	77	107	119	VCR Male	1/4"	D	1-LF-3210
KF50	KF FEEDTHROUGH - 1 TUBE	148	77	-	-	SWG	1/4"	A	1-LF-2120
KF50	KF FEEDTHROUGH - 1 TUBE	148	77	-	-	VCR Male	1/4"	A	1-LF-3120
KF50	KF FEEDTHROUGH - 2 TUBE	148	77	107	119	SWG	1/4"	D	1-LF-4210
KF50	KF FEEDTHROUGH - 2 TUBE	148	77	107	119	VCR Male	1/4"	D	1-LF-5210

# 2.0 flanges & fittings

**vaqtec**-scientific

quality in vacuum technology

**vaqtec-scientific**

Thulestr. 18b

D-13189 Berlin

Germany

Tel. +49 (0)30 7871 3158

Fax: +49 (0)30 787 13159

[sales@vaqtec-scientific.com](mailto:sales@vaqtec-scientific.com)

Distributed by: